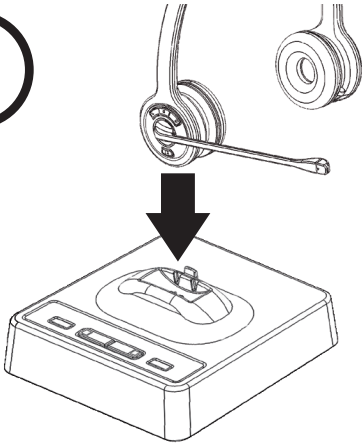


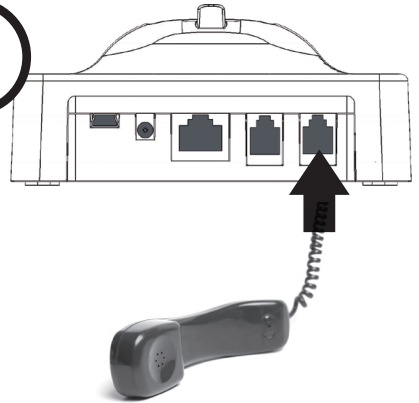
Set up your new headset in just two minutes!

1



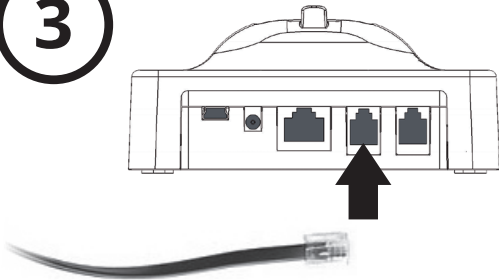
Plug in the base with the included AC adaptor. Then place the LH270 or LH275 in the base and let it charge for 4 hours.

2



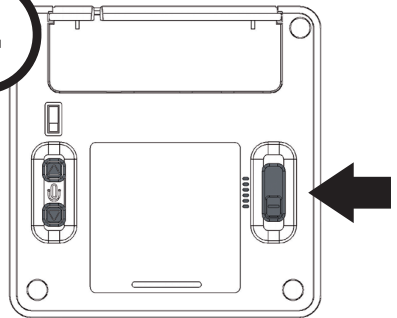
Unplug the telephone handset's curly cord from the phone base and plug into the Handset Port on the LH270 or LH275.

3



Plug one end of the included telephone cord into the Handset Jack of your phone. Plug the other end into the Telephone Connector Port (TEL Port) on the LH270 or LH275 base.

4



Make sure the Compatibility Switch is set correctly (most phones use setting 1). You can always call us to get the correct setting for your phone model.

*Questions? Just want to see if your speaking volume is loud and clear? We're happy to help!
Call us at 1-800-432-3738, Monday through Friday 6am-4:30pm Pacific Time, for FREE lifetime support.*