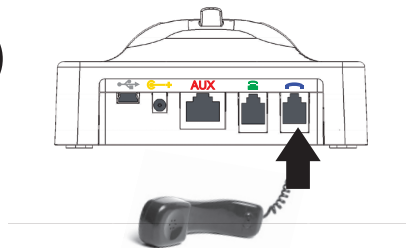


LH280 Quick Start Guide

Installing *without* a headset icon on your phone

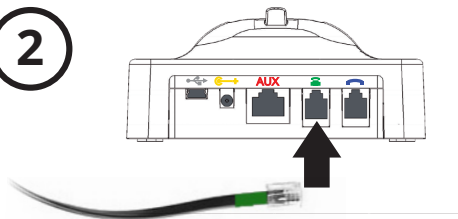
Flip to the other side if your phone has a headset icon

1



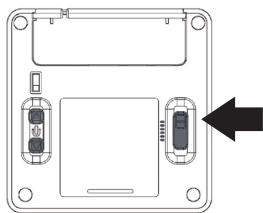
Unplug the telephone handset's curly cord from the phone base and plug into the Handset Port on the LH280

2



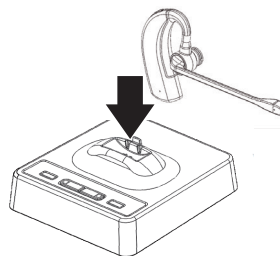
Plug one end of the telephone connector cord (green cord) into the Handset Jack of your phone. Plug the other end into the Telephone Connector Port (TEL Port) on the LH280 base

3



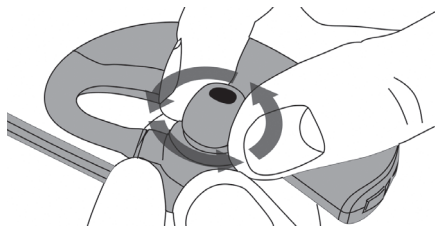
Make sure the Compatibility Switch is set correctly (most phones use setting 1). You can always call us to get the correct setting for your phone model

4



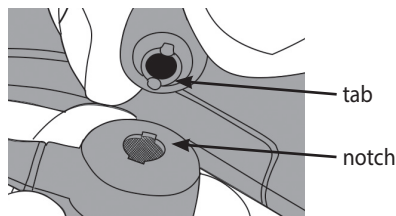
Plug in the base with the included AC adaptor. Install the battery into the headset and place in the base. Let it charge for 4 hours

5



To replace the eartip, first grasp the existing eartip firmly and rotate counterclockwise to remove

6



To install the new eartip, insert it into the opening in the headset, being sure to align the tabs on the eartip with the notches in the opening. Rotate clockwise to tighten

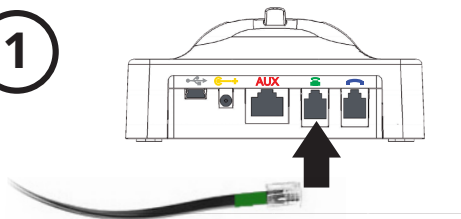
Questions? Just want to see if your speaking volume is loud and clear? We're happy to help!
Call us at 1-800-432-3738, Monday through Friday 6am-4:30pm Pacific Time, for FREE lifetime support

LH280 Quick Start Guide

Installing *with* a headset icon on your phone

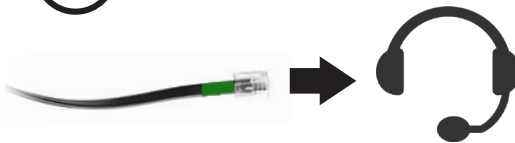
Flip to the other side if your phone doesn't have a headset icon

1



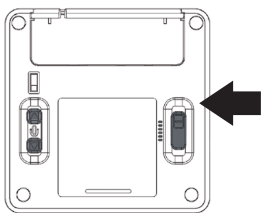
Plug one end of the telephone connector cord (green cord) into the Handset Jack of your phone. Plug the other end into the Telephone Connector Port (TEL Port) on the LH280 base

2



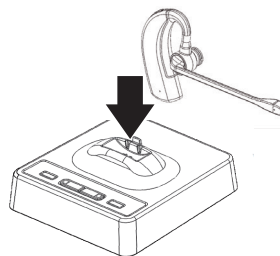
Plug the other end of the telephone cord into the Headset Jack of your phone

3



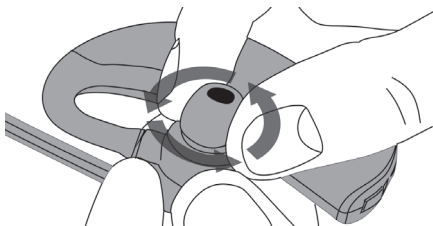
Make sure the Compatibility Switch is set correctly (most phones use setting 1). You can always call us to get the correct setting for your phone model

4



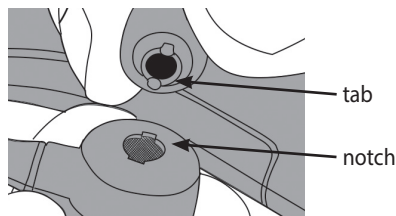
Plug in the base with the included AC adaptor. Install the battery into the headset and place in the base. Let it charge for 4 hours

5



To replace the eartip, first grasp the existing eartip firmly and rotate counterclockwise to remove

6



To install the new eartip, insert it into the opening in the headset, being sure to align the tabs on the eartip with the notches in the opening. Rotate clockwise to tighten

Questions? Just want to see if your speaking volume is loud and clear? We're happy to help!
Call us at 1-800-432-3738, Monday through Friday 6am-4:30pm Pacific Time, for FREE lifetime support